

## Digital Undercounter ecostore HP Premium Refrigerated Counter - 590lt, 8x1/2 Drawers, No Top

ITEM # \_\_\_\_\_

MODEL # \_\_\_\_\_

NAME # \_\_\_\_\_

SIS # \_\_\_\_\_

AIA # \_\_\_\_\_


**710085 (EH4H7BBB)**

 8-drawer Refrigerated  
Counter 590lt, -2+10°C, AISI  
304, without WorkTop

### Short Form Specification

#### Item No. \_\_\_\_\_

AISI 304 stainless steel panels, AISI 430 bottom panel, galvanized back panel. N. 8X1/2 drawers. Built-in refrigeration unit. Operating temperature: -2+10°C. R290 gas in refrigeration circuit.

### Main Features

- Preservation performances and temperature uniformity within the cell guaranteed at 5-HEAVY DUTY (40°C) working conditions according to EN16825:2016 test protocol.
- Adjustable temperature range from -2 °C to +10 °C to suit meat, fish and dairy storage requirements.
- Large digital white-digit display with humidity selection button (3 preset level), internal temperature display and setting, manual activation of defrost cycle and turbo frost cycle (to rapidly cool warm loads).
- Equipped with Optiflow forced air circulation system for rapid cooling and temperature distribution within the cell.
- 0mm clearance installation space: tower configuration cooling unit guarantee performance with frontal ventilation only; this unique solution allows installation against the wall or side by side with other appliances, even on the cooling unit side to maximize the use of kitchen space.
- Combination of doors and drawers to suit any configuration needed, with the possibility to change the configuration on site. Right cooling unit available on request.
- Fully removable cooling unit to facilitate maintenance.
- Frontal and easy access to all components in the cooling unit.
- Fully compliant HACCP digital control: when temperature exceeds critical limits, acoustic and visual alarms are activated. Up to two months of event are kept in memory.
- Anti-tilt runners accept GN 1/1 containers.
- Self closing stainless steel doors (< 90°).
- Certified safety CE requirements.
- Prearranged to fit RS485 port to facilitate connection to a remote computer and integrated HACCP systems.
- Hot gas automatic evaporation of defrost water.
- Connectivity ready for real time access to connected appliances from remote and data monitoring (requires optional accessory).
- Large digital white-digit display with cabinet temperature display and setting, and possibility to select the desired levels of humidity. Bluetooth technology included allows to keep HACCP historical data and download them through the app.
- Electrolux Professional Fridge Control APP make the life easier for our customers:
  - Monitor safety of preservation process thanks to HACCP data & alarms for precise control
  - Save time and easy data management having the possibility to send the HACCP information in excel format directly to e-mail address
  - Quick operations: set the cabinet temperature/humidity/turbocooling and set date/hour
- Tropicalized unit.

APPROVAL: \_\_\_\_\_

## Construction

- Interior base with rounded corners, pressed from a single sheet.
- Ease of cleaning and high hygiene standards thanks to the rounded internal corners, the easily removable runners, grids and air conveyors.
- Internal structure with 15 charging positions (3 cm pitch) available to host GN 1/1 grids, ensuring higher net capacity and a greater storage space.
- Mounted on Stainless steel legs to give 150 mm clearance for ease of cleaning the floor.
- External bottom panel in stainless steel.
- External back panel in galvanized steel.
- Built-in refrigeration unit.
- Developed and produced in ISO 9001 and ISO 14001 certified factory.
- Fault code display.
- Internal dimension of the drawers:
  - models with 2 1/2 drawers: 1st drawer (top drawer) 203x302x521 / 2nd drawer 223x302x521 (HxWxD)
  - models with 3 1/3 drawers: 1st drawer (top drawer) 98x302x521 / 2nd and 3rd drawers 118x302x521 (HxWxD)
  - models with 1/3+2/3 drawers: 1st drawer (top drawer) 98x302x521 / 2nd drawer 333x302x521 (HxWxD)

## Sustainability

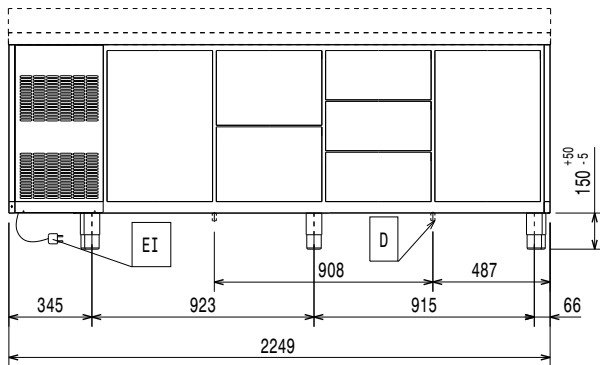


- Removable triple-chamber balloon magnetic gasket to improve insulation and reduce energy consumption and ease of cleaning.
- Fitted with 90 mm thickness of cyclopentane insulation for best insulating performance (thermal conductivity: 0,020 W/m\*K) and lowest environmental impact (GWP=3).
- Frost Watch Control starts automatically the defrosting process only when needed and ends once ice is melted, improving energy efficiency results.
- Hydrocarbon refrigerant gas R290 for the lowest environmental impact (GWP=3) - CFC and HCFC free.
- CFC and HCFC free, highly ecological refrigerant type: R290 (ecological gas in foam: cyclopentane). Hydrocarbon refrigerant gas R290 for the lowest environmental impact (GWP=3), to reduce green house and ozone depletion effects.

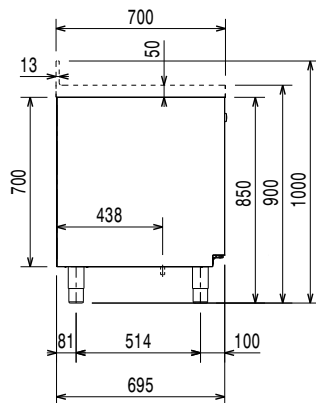
## Optional Accessories

- |   |            |                          |
|---|------------|--------------------------|
| • 2x½ drawer kit for refrigerated counters                | PNC 881058 | <input type="checkbox"/> |
| • 3x1/3 drawer kit for refrigerated counters              | PNC 881059 | <input type="checkbox"/> |
| • 1/3 and 2/3 bottle drawer kit for refrigerated counters | PNC 881071 | <input type="checkbox"/> |
| • 1/1 GN plastic container, H=65 mm                       | PNC 881110 | <input type="checkbox"/> |
| • 1/1 GN plastic container, H=100 mm                      | PNC 881111 | <input type="checkbox"/> |
| • 1/1 GN plastic container, H=150 mm                      | PNC 881112 | <input type="checkbox"/> |

Front

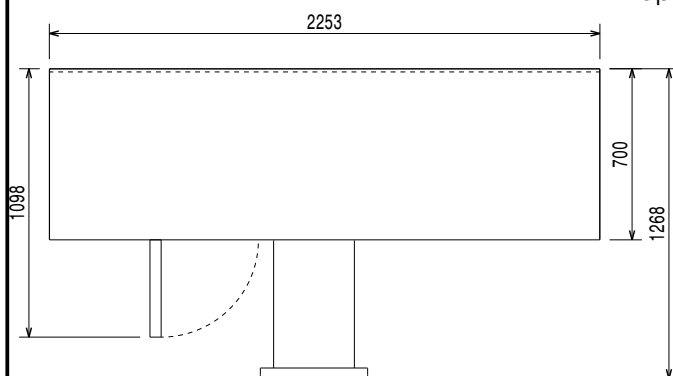


Side



EI = Electrical inlet (power)

Top



## Electric

|                        |                      |
|------------------------|----------------------|
| Supply voltage:        | 220-240 V/1 ph/50 Hz |
| Electrical power, max: | 0.25 kW              |
| Defrost Power:         | 0.22 kW              |
| Plug type:             | CE-SCHUKO            |

## Key Information:

|                              |                     |
|------------------------------|---------------------|
| Net Volume:                  | 248 lt              |
| Door hinges:                 |                     |
| External dimensions, Width:  | 2249 mm             |
| External dimensions, Depth:  | 700 mm              |
| External dimensions, Height: | 850 mm              |
| Internal Dimensions, Width:  | 1706 mm             |
| Internal Dimensions, Depth:  | 560 mm              |
| Internal Dimensions, Height: | 550 mm              |
| Net weight:                  | 168 kg              |
| Shipping volume:             | 1.71 m <sup>3</sup> |
| Depth with doors open:       | 1110 mm             |
| Height adjustment:           | -5/50 mm            |
| Gross capacity:              | 590 lt              |

## Refrigeration Data

|   |                      |
|---|----------------------|
| Control type:                                   | Digital              |
| Refrigeration power at evaporation temperature: | -10 °C               |
| Min/Max internal humidity:                      | 40/85                |
| Operating temperature min.:                     | -2 °C                |
| Operating temperature max.:                     | 10 °C                |
| Compressor power:                               | 1/4 hp               |
| Operating mode:                                 | Ventilated           |
| Insulation:                                     | 90 mm (Cyclopentane) |

## ISO Certificates

|                |   |
|----------------|---|
| ISO Standards: | ISO 9001; ISO 14001; ISO 45001; ISO 50001 |
|----------------|---|

## Sustainability

|  |                        |
|--|------------------------|
| Current consumption:                                     | 1.8 Amps               |
| Refrigerant type:  | R290                   |
| GWP Index:   | 3                      |
| Refrigeration power:                                     | 320 W                  |
| Refrigerant weight:                                      | 70 g                   |
| Energy Class (EU Reg. 2015/1094):                        | C                      |
| Yearly and daily energy consumption (EU Reg. 2015/1094): | 883kWh/year - 2kWh/24h |
| Climate class (EU Reg. 2015/1094):                       | Heavy Duty (5)         |
| Energy Efficiency Index-EEI (EU Reg. 2015/1094):         | 36,43                  |



**Electrolux**  
PROFESSIONAL

## Digital Undercounter ecostore HP Premium Refrigerated Counter - 590lt, 8x1/2 Drawers, No Top

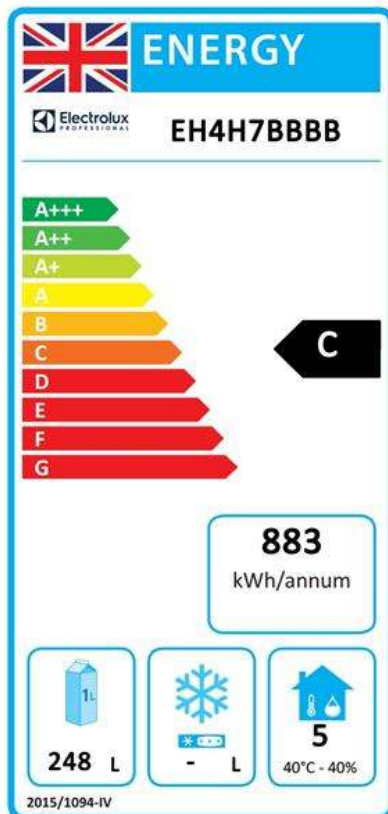
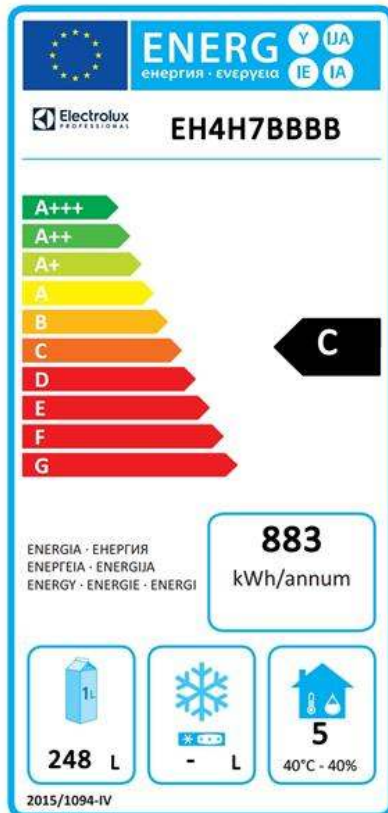
### EU energy labelling from 1st July 2016

The European energy labelling scheme for professional refrigerators and freezers is based on requirements setting Minimum Energy Performance standards for commercial refrigeration cabinets sold within the EU.

These requirements are designed to drive energy efficiency and environmentally friendly approach for professionals. The European energy labelling scheme will apply to all manufacturers and importers who sell and market products within the EU and it is mandatory across Europe. Important: all products which consume energy above the minimum level will not be able to be sold within the EU from 1 July 2016.

SI 2020 No. 1528.

Important: all products which consume energy above the minimum level will not be able to be sold within the EU from 1 July 2016.



Digital Undercounter  
ecostore HP Premium Refrigerated Counter - 590lt, 8x1/2 Drawers, No  
Top  
The company reserves the right to make modifications to the products  
without prior notice. All information correct at time of printing.

2025.06.20